



Homecross House, Chiswick, W4 1YA

Guide Price £305,000

WHITMAN & CO.

SALES · LETTINGS · COMMERCIAL

- Retirement home
- 20'7 x 10'7 reception room
- Newly fitted kitchen
- Lovely views over Chiswick back common
- Double bedroom with fitted wardrobe
- Newly fitted bathroom with walk-in shower

Tenure - Leasehold
 Lease length - 58 years remaining
 Ground rent - £511.20 pa
 Service charge - £1719.01
 Local authority - Hounslow
 Council tax - Band D

THE PROPERTY

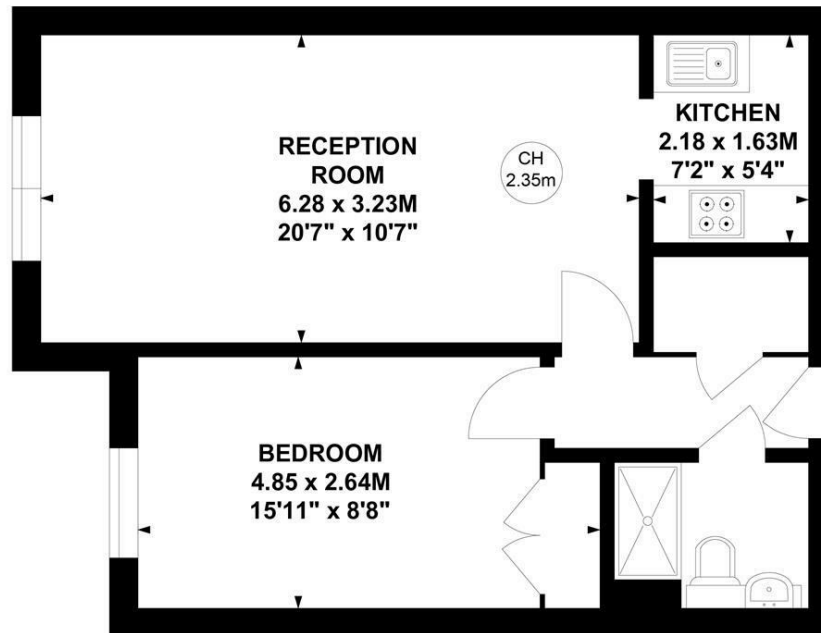
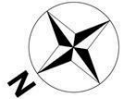
Recently decorated first-floor apartment with lovely views over Chiswick back common, forming part of this secure private retirement block in the heart of Chiswick.

The flat comprises a 20'7 x 10'7 reception room, double bedroom with fitted wardrobe, newly fitted kitchen, newly fitted bathroom with walk-in shower, views over Chiswick back common from reception and bedroom, lift, communal living room, laundry, house manager, assistance alarm. Homecross House is moments from Chiswick High Road's numerous facilities, including Marks and Spencer's and Boots. Transport links include Turnham Green Station, local bus routes and the A4/M4 for routes in and out of town.

Homecross House, W4

Approximate Gross Internal Area
 45.67 sq m / 491 sq ft

Key :
 CH - Ceiling Height



First Floor

Not to scale, for guidance only and must not be relied upon as a statement of fact.
 All measurements and areas are approximate only

SITUATION



5-7 Turnham Green Terrace, Chiswick, London, W4 1RG

Tel 020 8747 8800

E-mail sales@whitmanandco.com

Website www.whitmanandco.com